

Pump Services  
Including:

- Laser Alignment
- OSHA Confined Space
- Emergency Service
- Scheduled Preventative  
Maintenance Services
- Rotating Element Rebuilds
- Factory Authorized Service
- Control Diagnostics
- Variable Speed Drives
- Pressure Booster Pump
- Retrofit Installations
- Split Case Pump Rebuilds
- Electric Motor Repair



Variable Speed Booster System

# Mechanical & Pump Services Inc.

Serving the  
Municipal,  
Commercial &  
Industrial Markets



Service performed On Site or in our  
Service Center for your convenience.



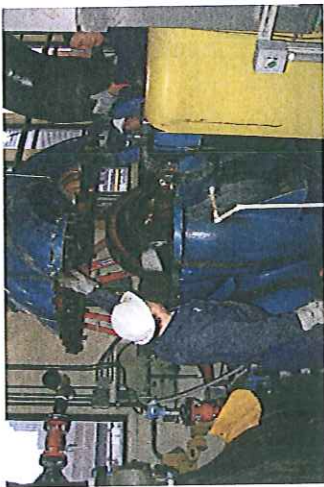
## Organization

**Mechanical & Pump  
Services Inc.**

121 Commerce Way  
PO Box 716  
South Windsor, CT 06074-0716  
Phone: 860-291-0266  
Fax: 860-291-0433

# Mechanical & Pump Services Inc.

Quality, Fast, Friendly Service in order to provide complete customer satisfaction.



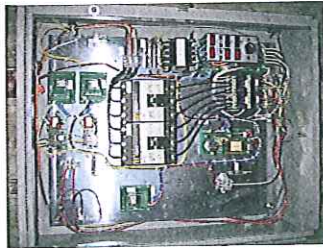
650 HP Horizontal Split Case Pumps being taken apart for rebuild

**Rebuilds:** Equipment is removed, sandblasted, epoxy coated and then the wear items (Shaft, Sleeves, Wear Rings, Impellers, Mechanical Seals) are either replaced or restored allowing the equipment to be brought back to original factory specifications.



## Controls and Variable Speed Drives:

Diagnostic, Startup, Preventative Service and Repair of your controls and drive systems is one of the foundations that



we have built our reputation on. Many companies can fix your pump, but very few can properly diagnosis and fix your entire system from the pump all the way back to the incoming power supply.

## Emergency Service:

Is available 24 hours a day, seven days a week for your continued assurance and piece of mind. We also have after hour non emergency service rates if work needs to be completed on site after regular business hours.



The above pumps may look pretty, but this seal caused all sorts of problems for its owner.

Mechanical & Pump Services Inc.

121 Commerce Way  
PO Box 716  
South Windsor, CT 06074-0716

Phone: 860-291-0266  
Fax: 860-291-0433